

## STORAGE AND DISPOSAL

Storage: Store in a cool area (40-95°F/5-35°C). DO NOT FREEZE, DO NOT EXCEED 105°F/40°C for a period in excess of 24 hours. Ensure good air circulation around each container. When kept under proper storage our proprietary technologies and advanced packaging permit shelf life of 2 plus years. Do not use if incorrectly stored.

Disposal: Nonrefillable container. Product and packaging waste, or unused, outdated product, may be disposed of on site or at any approved waste disposal facility in accordance with Federal and local regulations. Please triple-rinse and recycle this aluminum bottle.

## PRECAUTIONARY STATEMENTS

- Do not get in eyes, on skin or on clothing.
- Wash hands, forearms, and other exposed areas thoroughly after handling.
- Do not eat, drink, or smoke when using this product.
- Do not breathe vapors, mist, or spray.

## FIRST AID

### IF SWALLOWED:

- May upset the gastrointestinal tract.
- Have person sip a glass of water if able to swallow.
- Do not induce vomiting.

IF INHALED: Move person to fresh air.

IF IN EYES: Hold eye open and rinse slowly and gently with water for 15-20 minutes. Remove contact lenses, if present, after the first 5 minutes, then continue rinsing eye.

### IF ON SKIN OR CLOTHING:

- (1) Take off contaminated clothing. (2) Rinse skin immediately with plenty of water for 15-20 minutes.

## ENVIRONMENTAL HAZARDS

No known effect to humans and livestock, no known pollution to water or soil. Best land management practices should be used at all times.

This product has not been registered by the United States Environmental Agency. GroPro represents that this product qualifies for exemption from registration under FIFRA and other EPA exemption classifications.

## HOT LINE NUMBER

Have the product container or label with you when calling a poison control center or doctor, or going for treatment. For emergency information call the National Pesticides Information Center 1-800-858-7378, 6:30 AM to 4:30 PM Pacific time (PT), seven days a week. During other times, call the poison control center 1-800-222-1222.

## DIRECTIONS FOR USE

Shake Skeeter® bottle to mix product thoroughly. Add water to spray tank, then add required amount of Skeeter, top off with water as needed. Adjust rates depending on levels of mosquito and midge.

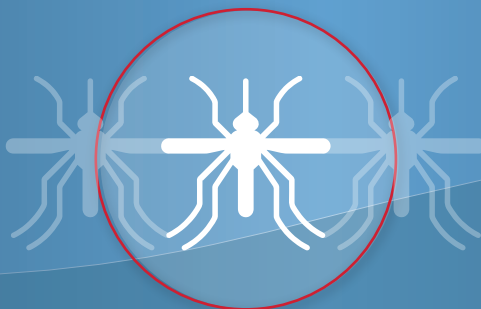
Mix rate for Skeeter® is 11mL to 44mL per 1L of water for coverage up to 1,000 sqft of surface water sprayed. 16oz to 64oz of Skeeter® per 10 gallons of water in spray tank for coverage up to 1 surface acre of water sprayed.

Use spray solution within 48 hrs; always agitate before spraying. Once open, store in a cool dry place and use within 30 days.



# SKEETER

## MOSQUITO CONTROL



## BIOCIDE: MOSQUITO & MIDGE

### ACTIVE INGREDIENTS

Garlic Oil ..... 20.00%  
Soybean Oil ..... 1.00%  
INERT INGREDIENTS\* ..... 79.00%

TOTAL ..... 100.00%

\*Water, Egg

KEEP OUT OF REACH OF CHILDREN  
CAUTION

NET CONTENTS: 32 fl oz (0.946L)

MANUFACTURED BY:



12600 West Frontage Road,  
Burnsville MN 55337

Phone: 1-833-476-7761  
www.groproaom.com



## APPLICATION TABLE

**TIME TO USE:** At start of mosquito/midge infestation, reapply every 30 days, or as reinfestations warrant.

<b>BACKPACK /TANK MIX</b> Fresh water, catch basins, old tires, run-off/drainage, livestock troughs, low organic matter in water.	<b>MIX RATE</b> 1.6oz to 3.2oz per 1 gallon of water, coverage up to 4,300 sqft. 16oz to 32oz per 10 gallons of water, coverage up to 1 surface acre of water.
<b>BACKPACK /TANK MIX</b> Brackish water, swimming pools, light to medium organic matter in water.	<b>MIX RATE</b> 2.4oz to 4.8oz per 1 gallon of water, coverage up to 4,300 sqft. 24oz to 48oz per 10 gallons of water provides coverage up to 1 surface acre of water.
<b>BACKPACK /TANK MIX</b> Dairy ponds, sewage, high organic matter in water.	<b>MIX RATE</b> 4.8oz to 6.4oz per 1 gallon of water, coverage up to 4,300 sqft. 48oz to 64oz per 10 gallons of water provides coverage up to 1 surface acre of water.
<b>DRONE APPLICATION</b> Use higher concentration for higher organic matter in water.	<b>MIX RATE</b> 16oz - 64oz per 2 gallons of water, coverage up to 1 surface acre of water.
<b>HELICOPTER OR FIXED WING AIRCRAFT</b> Use higher concentration for higher organic matter in water.	<b>MIX RATE</b> 1.6oz to 6.4oz per 1 gallon of water, coverage up to 4,300 sqft. 16oz to 64oz per 10 gallons of water provides coverage up to 1 surface acre of water.

Crop Areas: Skeeter may be applied to irrigated croplands after flooding to control mosquitoes and midge. Examples: vineyards, berry fields, rice fields, fruit and nut orchards, date palm orchards, and bogs. Irrigated pastures may be treated after each flooding without the removal of grazing livestock.

SKEETER® is comprised of absolute botanicals. Our absolute botanicals penetrate larvae and pupae and coat the body inducing a central nervous system destruction and also destroys eggs.

For the State of Wisconsin, users must obtain required permits prior to making applications to bodies of water.

## EFFICACY

Effective against various Culex, Aedes, and other Mosquito larvae and pupae plus various Midges.

To the extent consistent with applicable law, Seller makes no warranty, expressed or implied, concerning the use of this product other than indicated on the label. To the extent consistent with applicable law, Buyer assumes all risks of use and handling of this material when such use and handling are contrary to label instructions.

ENVIRO LINE

ENVIRO LINE